

**Allen Central High School
Softball Field Upgrade
TIMELINE**

20 February	Fence / Score Board Ordered
25 February	Meet with County Judge Executive Set Time Line for Work
26 February	Meet with Superintendent / Floyd County Schools Maintenance / Finance Director – Establish Funding Source
5 March	Coordination Meeting with County Government Order Materiel for Dug Outs
12 March	Begin Field Enhancements / Upgrades
18 March	Emplace Ground Sleeves for Portable Fence With Distance Banners and Foul Poles Test Scoreboard
19 March	Dug Outs Complete
26 March	First Home Game
6 April	Pictures to the KHSAA

A cost estimate for the softball field to be built on Allen Central's campus would cost in excess of \$350,000. It was determined to upgrade the existing softball field at Garrett Park. Fence and scoreboards are portable and will be 'installed' before softball games and removed after softball games and stored in a safe, secure area. Upgrade of current softball field is estimated to cost \$11,235.



ALLEN CENTRAL HIGH SCHOOL

Ms. LORENA HALL, PRINCIPAL
MRS. PAMELA FRASURE, ASSISTANT PRINCIPAL
LTC(R) LARRY MAYNARD, ATHLETIC DIRECTOR
P.O. Box 139
EASTERN, KENTUCKY 41622-0139
TELEPHONE: (606) 358-5305
FACSIMILE: (606) 358-9247



26 February 2009

Memorandum For: All Coaches

Subject: Locker Room, Office, and Storage Area Assignment

1. After discussion with the Superintendent, Director of Maintenance, and Director of Finance, we have come to the logical conclusion that we do not have money to construct a weight training facility and classroom. However, long range plans will be submitted in the hopes that money will be allocated toward the Gender-Equitable weight training facility.

2. In the plan for the weight room were office / storage areas for both the baseball and softball team coaches and equipment. Since that is not an option in the near-term, we have to make due with what we have.

3. Locker Room, Office, and Storage.

A. Baseball.

- 1) Locker Room – Boys Basketball PE Area.
- 2) Coach Office – Classroom.
- 3) Storage Area – Share with Softball in Under Gym Area and in room by stairs.

B. Boys Basketball.

- 1) Locker Room – Boys Basketball Locker Room Area (In Season).
- 2) Coach Office – Basketball / PE Office.
- 3) Storage Area – Coach's Office Area.

C. Girls Basketball.

- 1) Locker Room – Girls Basketball Locker Room (In Season).
- 2) Coach Office – Basketball Locker Room Area.
- 3) Storage Area – Basketball Locker Room Area.

D. Football.

- 1) Locker Room – Football Field House (In Season).
- 2) Coach Office – Classroom (Primary) and Field House.
- 3) Storage Area – Football Field House.

E. Softball.

- 1) Locker Room – Girls Basketball PE Area.
- 2) Coach Office – Classroom.
- 3) Storage Area – Share with Baseball in Under Gym Area and in room by stairs.

"Whatever is best for the Team, We Do!"

The Floyd County Board of Education does not discriminate on the basis of race, color, national origin, age, religion, marital status, sex, or disability in employment, educational programs, or activities as set forth in Title IX and in Section 504.

26 February 2009

Subject: Locker Room, Office, and Storage Area Assignment

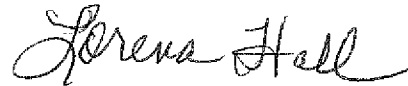
F. Track.

- 1) Locker Room – Football Field House
- 2) Coach Office – Girls Basketball Locker Room Area (Primary) / Football Field House
- 3) Storage Area – Football Field House and Storage Facility.

G. Volleyball.

- 1) Locker Room – Volleyball Locker Room Area.
- 2) Coach Office – JROTC Office.
- 3) Storage Area – Volleyball Locker Room Area.

2. Points of Contact are Ms. Hall, 358-9543, ext. 4301 or LTC(R) Maynard, 358-5305.



Lorena 'Sis' Hall
Principal

ldm



ALLEN CENTRAL HIGH SCHOOL
Ms. LORENA HALL, PRINCIPAL
Mrs. PAMELA FRASURE, ASSISTANT PRINCIPAL
LTC(R) LARRY MAYNARD, ATHLETIC DIRECTOR
P.O. BOX 139
EASTERN, KENTUCKY 41622-0139
TELEPHONE: (606) 358-5305
FACSIMILE: (606) 358-9247



26 February 2009

Memorandum For: All Coaches

Subject: Cheerleading Event Attendance

1. During the 13 April 2005 Gender Equity Meeting and the School Based Decision Making Counsel, Allen Central chose to have One Cheer Squad because we were not fully in compliance with Title IX in that, having two squads "more than likely indicated that one squad will be more talented than the other."
2. Also at the meeting, we set the total girls allowed on the team at 20 and the minimum at 12. There is also a requirement to establish a Junior Varsity Squad for the girls who could not make the varsity squad.
3. Because we have one squad, they are dedicated to cheering for both genders an equal amount of time.
 - Required to cheer at all home basketball games (girls or boys) and football games.
 - Required to cheer at Away basketball games on an equitable basis (must cheer at the same amount of away boys' basketball games and away girls' basketball games).
 - Required to cheer at both the Boys' and Girls' Tournament games until its conclusion for either team.
 - The Principal, Assistant Principal, and Cheer Sponsor will assign the cheerleading squad on an equitable basis to both boys' and girls' games before the first scheduled games are played.
4. Bottom line: Comply with Title IX and the KHSAA – Assign the cheerleading squad an equal number of games for the boys' team and the girls' team.
5. Points of Contact are Ms. Hall, 358-9543, ext. 4301 or LTC(R) Maynard, 358-5305.

Lorena 'Sis' Hall
Principal

ldm

"Whatever is best for the Team, We Do!"

The Floyd County Board of Education does not discriminate on the basis of race, color, national origin, age, religion, marital status, sex, or disability in employment, educational programs, or activities as set forth in Title IX and in Section 504.



ALLEN CENTRAL HIGH SCHOOL
MS. LORENA HALL, PRINCIPAL
MRS. PAMELA FRASURE, ASSISTANT PRINCIPAL
LTC(R) LARRY MAYNARD, ATHLETIC DIRECTOR
P.O. BOX 139
EASTERN, KENTUCKY 41622-0139
TELEPHONE: (606) 358-5305
FACSIMILE: (606) 358-9247



26 February 2009

Memorandum For: All Coaches

Subject: Travel / Transportation

1. Transportation costs eat up a major portion of the total athletic monies, particularly for non-revenue producing sports.
2. The amount of money required for transportation depends on the distances between Allen Central and others within the district, region, and non-region schools and on the schedule for the year. The best way to estimate the transportation budget is to use the form (Enclosure A). It should list the distances between our school and the schools you will be visiting during the current year (Enclosure B), and compute total costs by applying a formula that involves bus use, meals, and over night accommodations.
3. Allen Central High School will not pay for meals and over night accommodations – money must be raised or donations found to fund per diem costs.
4. Floyd County Schools does not provide monies toward athletic budgets but does provide Section VII Monies for transportation. Baseball, Boys and Girls Basketball, Football, Softball, and Volleyball were allocated \$2500 for transportation costs for each sport. This money can only be applied toward Floyd County Schools' bus transportation. Any amount over \$2500 must be paid by gate monies, donations, and/or by your boosters. If there is a problem with this, then your boosters need to take this up with the Board. If we do not have the money – we cannot fund it. You must be prudent with you schedule, you must forecast the amount you expect to use, and you must stay within the \$2500 allocated.
4. Points of Contact are Ms. Hall, 358-9543, ext. 4301 or LTC(R) Maynard, 358-5305.

Lorena 'Sis' Hall
Principal

ldm

"Whatever is best for the Team, We Do!"

The Floyd County Board of Education does not discriminate on the basis of race, color, national origin, age, religion, marital status, sex, or disability in employment, educational programs, or activities as set forth in Title IX and in Section 504.

Approximate Transportation Costs

Sport _____

Year _____

Mileage	Contest Amount	Return Amount
1 – 25 Miles	\$	\$
26 – 50 Miles	\$	\$
51 – 75 Miles	\$	\$
76 – 100 Miles	\$	\$
101 – 200 Miles	\$	\$
201 – 300 Miles	\$	\$
301 - Over	\$	\$
Overnight	\$ + Room and Board	\$
Other	\$	\$

Away Contests

Number of Trips	Mileage	Cost
	0 – 25 Miles	
	26 – 50 Miles	
	51 – 75 Miles	
	76 – 100 Miles	
	101 – 200 Miles	
	201 – 300 Miles	
	> 300 Miles	
	Overnight	

Total Contests	Total Trans Cost
	\$

**Estimated (Conservative) Transportation Costs
For Allen Central**
(Average based upon Past Two Years)

LOCATION	COST
Allen Central Middle	\$103
Ashland	\$358
Belfry	\$246
Betsy Layne	\$187
Berea	\$588
Buckhorn	\$199
Clay County	\$245
East Ridge	\$286
Estill County	\$380
EXPO Center	\$190
Hazard	\$215
Jenkins	\$276
Jenny Wiley	\$119
Johnson County	\$178
June Buchanan	\$223
Knott County	\$162
Lawrence County	\$240
Letcher County	\$288
Magoffin County	\$196
Martin / Piarist	\$93
Morgan County	\$320
Mountain Arts	\$175
Paintsville	\$166
Perry County	\$273
Phelps	\$233
Pike Central	\$196
Pikeville	\$244
Powell County	\$343
Prestonsburg	\$200
PCC (KCTCS)	\$127
Rowan County	\$370

LOCATION	COST
Shelby Valley	\$283
Sheldon Clark	\$262
Somerset	\$329
South Floyd	\$174
Stumbo Park	\$148
Western Kentucky	\$445
Overnight Trips	\$1578

These are estimates based upon averages of past trips (over two years), gas rates, and drivers' wages (\$18 - \$28 hour), and for planning purposes only. You should add 4% - 5% to each of the averages above in order to stay within your \$2500.



ALLEN CENTRAL HIGH SCHOOL
MS. LORENA HALL, PRINCIPAL
MRS. PAMELA FRASURE, ASSISTANT PRINCIPAL
LTC(R) LARRY MAYNARD, ATHLETIC DIRECTOR
P.O. BOX 139
EASTERN, KENTUCKY 41622-0139
TELEPHONE: (606) 358-5305
FACSIMILE: (606) 358-9247



26 February 2009

Memorandum For: Whom It May Concern

Subject: Weight Training Room

1. After discussion with the Superintendent, Director of Maintenance, and Director of Finance, we have come to the logical conclusion that we do not have money to construct a weight training facility and classroom. However, long range plans will be submitted in the hopes that money will be allocated toward the Gender-Equitable weight training facility.
2. In the plan for the weight room were office / storage areas for both the baseball and softball team coaches and equipment (see attached Maintenance Requests and Diagram). Even though some girls' teams (Basketball and Volleyball) used the current weight room located in the field house on the football field, it is not centrally located, was not designed with female athletes in mind, and is not viable for a weight training class. Use by the female athletes was either after school or during the summer and programs was set up for conditioning and could not be used for maintenance.
3. The weight training room is primarily used by male athletes and this fact was painfully obvious four years ago. It was then that the idea to build a weight training facility in the old pool area once the pool was filled in. It was last year that weight training became an elective at Allen Central.
4. The weight training classroom is 'make-shift' at best. We have no mats, free weights are primarily designed for use by the males, devices are dilapidated, the universal machines are in dire need of repair, and generally are geared for male usage.
5. The propose weight training facility cost estimate was approximately \$75,000 to construct and equip. Floyd County Schools and Allen Central does not have the fiscal means to build a facility at this time but is placing it on the long-range plan in the hope that funds will be found and used.
6. The plan, although rough, called for the construction of a wall being emplaced on the Southeast portion of the old pool area.
 - A. Baseball / Softball storage areas would be included in the construction.
 - B. The weight room would be enclosed with one oversized door access. The floor would be covered with Interlocking Rubber Flooring Mats.
 - C. The facility would have Strength Equipment that is suitable for both males and females.
 - Self-Adjusting 3-way bench
 - Power Cage
 - 4-Stack Jungle

"Whatever is best for the Team, We Do!"

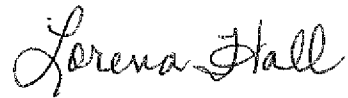
The Floyd County Board of Education does not discriminate on the basis of race, color, national origin, age, religion, marital status, sex, or disability in employment, educational programs, or activities as set forth in Title IX and in Section 504.

26 February 2009

Subject: Weight Training Room

- Multi-Press
- Shrug Bar
- Low Profile Glute / Ham
- Universal
- Assorted Dumbbells and racks
- Assorted Bars
- Assorted Weight Plates
- Exercise Rail System
- Medicine Balls
- Health Scales
- Muscle Charts / Exercise and Muscle Guide Charts

7. Points of Contact are Ms. Hall, 358-9543, ext. 4301 or LTC(R) Maynard, 358-5305.



Lorena 'Sis' Hall
Principal

ldm



ALLEN CENTRAL HIGH SCHOOL

MS. LORENA HALL, PRINCIPAL
MRS. PAMELA FRASURE, ASSISTANT PRINCIPAL
LTC(R) LARRY MAYNARD, ATHLETIC DIRECTOR
P.O. Box 139
EASTERN, KENTUCKY 41622-0139
TELEPHONE: (606) 358-5305
FACSIMILE: (606) 358-9247



Date: 7 December 2007

SY 2007 - 2008

Area Desired: Below gym Area (Pool)

Requested By: Athletics

Maintenance Request:

1. Relocate the batting cage from the corner area to the 'pool' area. Put up cables and attach it so it can be slid from the storage area and used then slid back into the storage area, when not in use.
2. Construct a wall storage area that the batting nets can be secured when not in use.
3. Install shelves and hangers in the current equipment/uniform storage area.
4. Construct a wall where the batting cage is now with three doors, one to access the proposed weight room, one for storage of softball equipment, and one for storage of baseball equipment. The current storage area will be for general storage.
5. Construct a hanging ceiling to aid with acoustics.
6. Repair leaks in the area.

Comments: Thank you. Allen Central will offer, implement, and currently (as of this resubmission 13 August 2008) has 25 students enrolled in weight training class for Physical Education this school year and must have an accessible, safe, and Title IX supported weight room. It will also support athletic weight training for volleyball, basketball, baseball, and softball.

Authorizing Signatures:

Lorena Hall

Lorena 'Sis' Hall
Principal

Larry D. Maynard

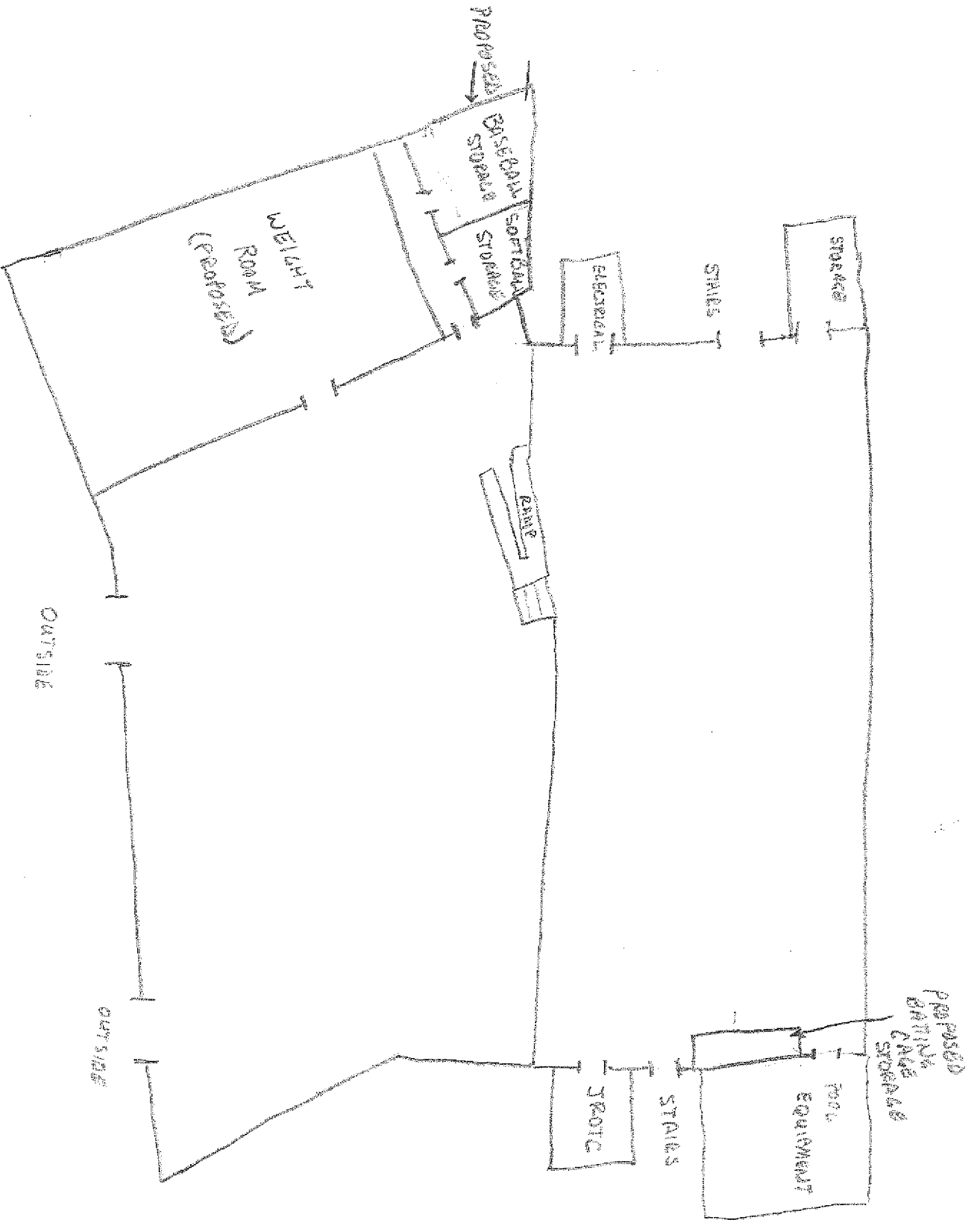
LTC(R) Larry D. Maynard
Athletic Director

Diagram of Request

Diagram was submitted with original work request. POC: LTC Maynard

"Whatever is best for the Team, We Do!"

The Floyd County Board of Education does not discriminate on the basis of race, color, national origin, age, religion, marital status, sex, or disability in employment, educational programs, or activities as set forth in Title IX and in Section 504.



NOT TO SCALE

Subject: meeting

Date: Mon, 15 Dec 2008 13:32:59 -0500

From: "Moore, Marvin - Supt." <Marvin.Moore@Rowan.kyschools.us>

To: "Bilberry Darren" <dbilberry@khsaa.org>

I got an e-mail from Henry Webb who said they have decided to handle the Title IX situation in-district and it was not necessary to meet on Thursday or Friday. I appreciate you trying to work something out. See you on Thursday at our Board of Control meeting.

*"No significant learning occurs without a significant relationship."
-Dr. James Comer*

"Together We Can"

Marvin Moore, Superintendent

Rowan County Schools

121 East Second Street

Morehead, KY 40351

(606) 784-8928

(606) 783-1307 (fax)